



IL-LED-SOPC

Product Specifications

Housing: 1.2mm Aluminum body Polycarbonate Lens Isolated LED driver

Mounting: Surface

Electrical: 110-277V

Wattage: 40W - 40W(Dimming) - 60W - 60W(Dimming)
80W - 80W(Dimming) - 120W - 120W(Dimming)

CRI: >83

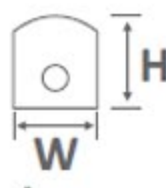
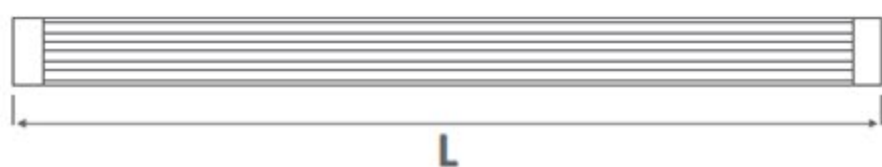
Lumens: 3800-4400 LM - 5700-6600 LM - 7600-8800 LM
11400-13200 LM

Color Temperature: 3000-6000K

Finish: White

Dimensions: 4' x 3.25" W x 3.5" H
8' x 3.25" W x 3.5" H

Dimensional Drawings:



Ordering information

Example: IL-LED-SOPC-2-4-30

Series	Source	Wattage	Voltage	CCT	Finish	Options
IL-LED-SOPC	LED=LED	4=40W=D 6=60W=D 8=80W=D 12=120W=D	110-277V	30=3000K 40=4000K 50=5000K 60=6000K	WH=White	

